

**WHAT IS SLES?**

School Leavers Employment Supports (SLES) is a NDIS service designed to support young people during their transition from school to work by helping to build their employment skills and confidence.

Each SLES Participant works closely with an Employment Consultant who ensures that they get the support and training that they need to achieve their employment goals.

- ✓ Secure work experience
- ✓ Gain real life experience
- ✓ Develop skills
- ✓ Discover their own unique pathway to employment



**WE ASSESS  
EVERYONE'S  
SUITABILITY FOR  
WORK EXPERIENCE**

**How does WDEA Works support our Participants during their work experience placement?**

- ✓ One-one-one support to our Participants.
- ✓ Ensure that the Participant understands the various aspects of your workplace, including dress code, employer expectations, and the tasks they will be undertaking.
- ✓ We will match the right person with the right opportunity.



**WE TEACH  
IMPORTANT PRE-  
EMPLOYMENT  
SKILLS**

**WHAT ARE THE BENEFITS  
OF PROVIDING A PLACEMENT  
FOR A PARTICIPANT?**

A work experience placement allows you to mentor the Participant and observe their potential.

Help kick-start a young person's career by offering much needed experience.

We can promote your business via our social media channels with a Good News Story about supporting students into the workplace.

# YOU CAN BE THE DIFFERENCE!



## HOW LONG IS THE WORK EXPERIENCE PLACEMENT FOR?


Work Experience typically lasts for around 4 weeks, however it can be shorter or longer depending on the needs and availability of the business and the Participant.

## WHAT TASKS CAN A PARTICIPANT DO?

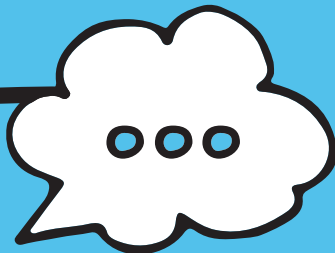
We will help you to identify suitable tasks that reflect the needs of your business and the abilities of the Participant.

## IS THE PARTICIPANT COVERED BY INSURANCE?

Yes. All SLES Participants are covered by WDEA Works' personal accident insurance while they are undertaking a work experience placement.



WDEA  
Works SLES  
Participant  
- Riley



**Speak to a  
WDEA Works  
Employment  
Consultant for  
all the finer  
details around  
how we support  
our Participants  
with Insurance.**



CALL NOW OR ENQUIRE ONLINE:

# 1300 521 511

[wdeaworks.org.au/SLES/register](http://wdeaworks.org.au/SLES/register)

**wdea**works

SUPPORTING OUR COMMUNITY