



**MEDICINE,
NURSING AND
HEALTH SCIENCES**

**2022 UNDERGRADUATE
COURSE GUIDE**

MONASH GRADUATES ARE CHANGING THE WORLD

At Monash, we are driven to help people live better, for longer. Illnesses including heart disease and diabetes place enormous pressure on the health system. Combined with an increased life expectancy and an ageing population, we need to do more to improve health and wellbeing at all stages of life. As well as chronic illnesses and disease, we proactively tackle mental health, addiction and quality of life in aged care - key health issues that came to the fore in the pandemic.

Visit the links provided to discover more about courses and careers that have led our graduates to make an impactful change.

**Future careers
in biomedical
science**

 youtu.be/qIBDGAF2VSc





CONTENTS

Why study Medicine, Nursing and Health Sciences at Monash? 2

Student experience 4

Our courses

Biomedical Science 6

Health Sciences 10

Medicine 12

Nursing 14

Nursing and Midwifery 16

Nutrition Science 18

Occupational Therapy 20

Paramedicine 22

Physiotherapy 24

Psychology 26


Public Health 28

Radiation Sciences and Radiation Sciences (Informatics) 30

Radiography and Medical Imaging 32

Course information fast facts

Look for these icons on each course page for key information.

 Location

 Duration

 Intakes

 Subject prerequisites

This course guide focuses on the features of our undergraduate courses. For information about entry requirements, please see monash.edu/study

Acknowledgement

We acknowledge the traditional lands of Indigenous peoples.

Indigenous knowledges and Indigenous students

Monash Medicine, Nursing and Health Sciences incorporates the Aboriginal and Torres Strait Islander Curriculum Framework in educating future health professionals. You'll learn skills in respect, communication, safety and quality, advocacy and reflection to improve Indigenous health.

Monash is committed to facilitating the entry of Indigenous students into courses. There are a range of pathways, entry points, bursaries, scholarships, accommodation, tutorial support and cadetships. To learn more about entry and our Indigenous Access Interview, contact Gukwonderuk Indigenous Health staff via med.indigenoushealth@monash.edu or 03 9905 3828.

WHY STUDY MEDICINE NURSING AND HEALTH SCIENCES AT MONASH?

Medicine, Nursing and Health Sciences at Monash University is one of Australia's largest providers of education for doctors, nurses and allied health professionals.

EIGHT REASONS TO STUDY WITH US

Do what you love from day one

All our undergraduate degrees are specialist courses, so you'll focus on your chosen area of study from the start of your degree.

Benefit from our partners

We partner with leading healthcare providers, including Alfred Health, Monash Health, Eastern Health and Peninsula Health. This gives you access to clinical placements in preparation for your health career.

Reputation for excellence

Did you know we're ranked in the top one per cent of universities in the world? Our research breakthroughs and our innovative teaching have cemented our reputation globally as a leader in medicine and health.

Multidisciplinary health community

You'll study alongside students from all areas of health. This prepares you to work collaboratively across professions in your future career.

A global alumni network

The benefits of studying at Monash continue long after you graduate. Access a network of almost 60,000 Faculty alumni who are making a difference in health worldwide.

Make a difference

At Monash, we don't accept the status quo. You'll question the answers, take action and be part of changing the world around you.

Become a leader, doer and game changer

Whether you want to unlock your leadership potential or start thinking like an entrepreneur, you'll have access to extracurricular programs that take you outside the classroom and solving real-world problems.

Unlock your leadership potential with the Ancora Imparo program. You'll learn directly from inspiring leaders, be mentored by Monash staff and alumni, and put your skills into practice by working in a team to solve a real-world problem for a community organisation.

Our peer mentoring program

We ensure you get academic support when you need it. Many of our courses offer peer mentoring programs, so you can learn from other students who've been in your shoes – whether it be help preparing for your first placement, practising your clinical skills or revising for an assessment.



#15*
NURSING

#37*
ANATOMY AND
PHYSIOLOGY

#36*
MEDICINE

*2021 QS World University
Rankings by Subject.

A MEMORABLE EXPERIENCE FROM DAY ONE

Although we're known for delivering a high quality education, that's not all you'll enjoy at Monash. You'll also have many opportunities to expand your network, make new friends, apply your skills – and be part of a community.



Find out more about student life:

monash.edu/medicine/study/student-life

SPECIAL REQUIREMENTS

Upon enrolment, you'll be asked to comply with the mandatory immunisation requirements, police and working with children checks in readiness for clinical/fieldwork placements. Failure to hold satisfactory checks may result in you being unable to complete your course.

🔗 monash.edu/medicine/study/student-services/mandatory-compliance for details.

You'll receive further instructions on the following requirements prior to/or on course commencement.



Immunisations

A Statement of Compliance form must be completed by a doctor from the University Health Service, Monash Infection Assessment Clinic, or your general practitioner.



Police check

You'll be required to obtain a police check annually.



Working With Children check

You must hold a Working with Children Check before undertaking clinical placements.



Health check*

Go to the Ambulance Victoria website 🔗 ambulance.vic.gov.au for more details on the medical and fitness examination.



Drug administration and controlled substances policy**

Refer to the faculty's clinical guidelines webpage for information about your legal responsibilities.

🔗 monash.edu/medicine/study/student-services/policies/clinical-fieldwork-placement



First aid

If your course has clinical placements you'll need to undertake the relevant first aid course (including CPR).

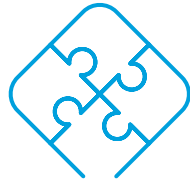
🔗 monash.edu/study

* Paramedicine only. ** Nursing only.



GET HANDS-ON

Volunteering is one of the most rewarding ways of developing your personal and professional skills. You can explore a range of volunteer roles both at Monash and outside of the University, and help make a positive change in your community.



ACCESS TO ONE-OF-A-KIND FACILITIES

Monash has some of the best facilities around. Our new Biomedical Learning and Teaching Building is a vibrant learning environment. The building contains four 'flexi labs' – adaptive learning environments each accommodating 240 students with world-leading AV speaker and video technology, enabling interdisciplinary sharing of spaces and ideas.



DOUBLE DEGREES TO DOUBLE YOUR HORIZONS

Spanning a range of areas such as Commerce, Engineering, Law and Science, our double degrees help you develop multidisciplinary skills and enhance your career prospects. Even better, they're faster to complete than two separate courses.



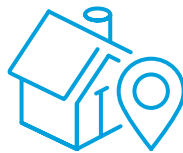
RURAL & REGIONAL OPPORTUNITIES

We offer unparalleled learning opportunities in regional and rural Victoria for health students. Our clinical training sites are attached to regional hospitals and partner with community-based health services with accommodation close by.



LEARN FROM LEADING EXPERTS

Study a degree that will take you further faster and become a part of our community. Our curriculum is informed by industry experts and leading clinicians, giving you the best employability outcomes. Help make a positive change in your community.



COMFORTABLE, CONVENIENT ACCOMMODATION

If you're coming from interstate, overseas or rural Victoria, we have on- and off-campus living options across Clayton and Peninsula and their surrounding suburbs.



DEDICATED CAREER SUPPORT

Monash Career Connect is your partner for success. By offering you tailored advice, regular workshops and connections to industry, it can help you with career planning, skills development, application writing and more.



VALUABLE RESOURCES FOR RICHER LEARNING

Whether you're writing a case study, preparing for an exam or giving an oral presentation, we have a wide variety of resources to help you excel in your course – available through the Monash website.



GUKWONDERUK

The Gukwonderuk unit supports our Aboriginal and Torres Strait Islander students to develop into healthcare professionals. This includes mentoring through our Indigenous healthcare student network, bursary and accommodation help.



DISABILITY SUPPORT SERVICES

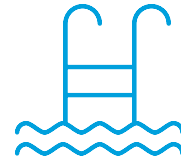
If you have a disability, or a medical or mental health condition that may impact on your study, our dedicated Disability Support Services can help you. Registered students can access services such as academic support, assistive software and equipment loans.

monash.edu/disability



MORE OPPORTUNITIES TO MAKE NEW FRIENDS

There are many clubs and societies in our faculty and across the University. For nearly ten years, the Monash Medical Orchestra has been a place where medical students are able to nurture a love of music and share that passion with others in our community.



ALL THE AMENITIES AND SERVICES YOU NEED

As the largest university in Australia, we're home to many amenities and services. These include theatres, a gym, a swimming pool, clinics, counselling and medical assistance.

📍 Clayton

🕒 3 years
(Standard and Scholars)

Time commitment
Approximately 20-25 contact hours
per week plus self-directed study.

➔ February

DEGREE AWARDED

Bachelor of Biomedical Science

DOUBLE DEGREES*

- Commerce
- Engineering (Honours)
- Laws (Honours)
- Science

* Not available with the Scholars Program. All double degrees will have different entry requirements.

SUBJECT PREREQUISITES

- ✓ English
- ✓ Mathematics: Methods, Specialist or Physics
- ✓ Chemistry

COURSE CODE: M2003 **CRICOS CODE:** 028805K



For detailed course requirements, scan this code or visit our **website**.

RANKED
37

**IN THE WORLD
FOR ANATOMY
AND PHYSIOLOGY**

2021 QS World University Rankings by Subject.

Bachelor of BIOMEDICAL SCIENCE

The Bachelor of Biomedical Science helps you understand disease, how it occurs and how we can prevent it to better improve quality of life.

By studying biomedical science, you'll explore the various body systems and the interactions between organs, tissues and cells, as well as the complex processes that occur to allow humans to function and develop normally. You'll also learn how the disruption of these processes can lead to disease, and you'll gain an understanding of how this knowledge fits into the big picture of human health.

Enjoy the flexibility of taking up to eight elective units, allowing you to do a major or minor outside the biomedical science disciplines.

Scholars Program

If you're a high-achieving student, you can apply for our Bachelor of Biomedical Sciences Scholars Program. Here you'll have opportunities to meet research staff and get involved in a range of events and extracurricular opportunities. You may also be eligible to receive a Biomedicine Discovery Scholarship.

🔗 monash.edu/study/fees-scholarships/scholarships/find-a-scholarship/biomedicine-discovery-scholarship

CAREER OPTIONS



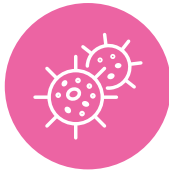
Anatomy and
Developmental
Biology



Biochemistry
and Molecular
Biology



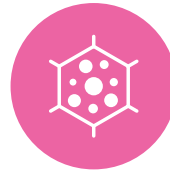
Bioinformatics



Epidemiology



Human
Pathology



Immunology



Pharmacology



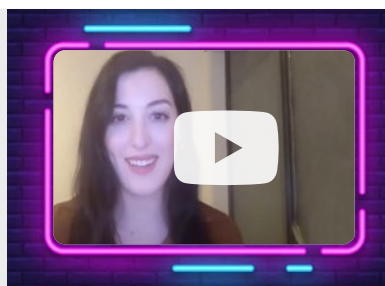
Physiology



Microbiology

**Where can a
biomedical
science degree
take you?**

🔗 youtu.be/Yoh7diw1N3w



COURSE STRUCTURE (Indicative)

Course progression

Here is the recommended course plan:

YEAR 1

Semester 1	Biomedical chemistry	Cells, tissues and organisms	Medical biophysics	Elective
Semester 2	Public health and preventive medicine	Human neurobiology	Molecular biology	Elective

YEAR 2

Semester 1	Structure of the human body: An evolutionary and functional perspective	Human molecular cell biology	Body systems	Elective
Semester 2	Human genetics	Microbes in health and disease	Introduction to bioinformatics	Elective

YEAR 3

Semester 1	Molecular mechanisms of disease	Elective	Elective
Semester 2	Biomedical basis and epidemiology of human disease	Elective	Elective

Compulsory Biomedical science studies (96 points)
 Free elective study (48 points)



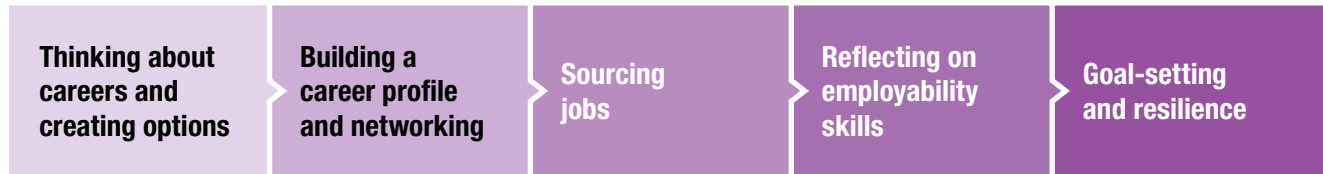
I recently completed a Bachelor of Biomedical Science at Monash. I was always interested in studying a combination of health and sciences which led me to biomedicine at Monash. I enjoyed several aspects of this course including a wide breadth of subjects, from public health to cancer, and lots of practical and active learning with labs and group projects.”

RADHIKA CHALIKAVADA
Bachelor of Biomedical Science (2019)

WHERE CAN A BIOMEDICAL SCIENCE DEGREE TAKE YOU?

Professional Development

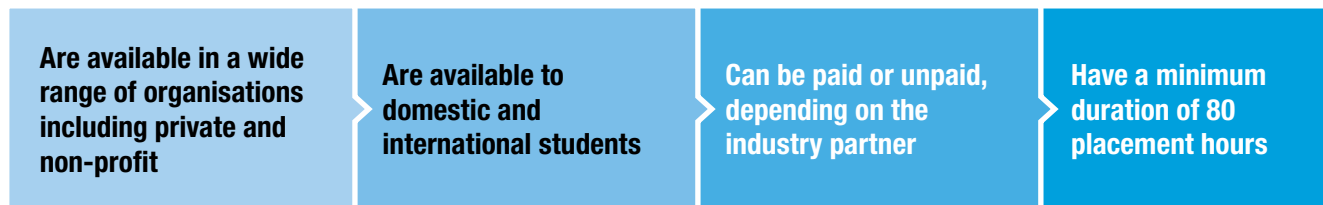
We offer an embedded professional development program, which integrates reflection on your employability skills into core biomedical science units. From your first year of study, you'll start building your ability to communicate effectively with employers, develop an e-portfolio of your skills, and network with representatives from industry, senior researchers and graduates. You'll complete the modules below:



Real-world career experiences for students

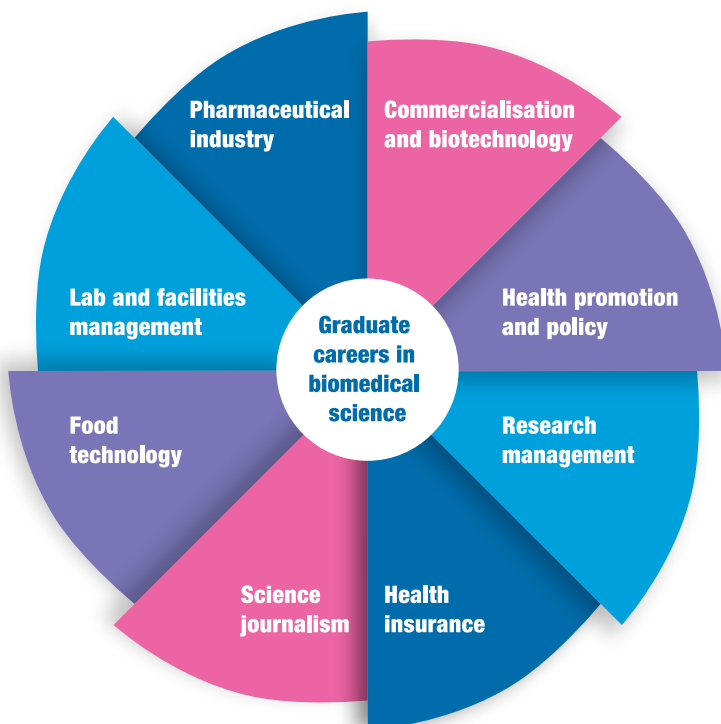
Get a head start with the biomedical industry-based learning elective (subject to availability and prerequisite requirements) – a three-week internship in a biomedical field. You'll learn the professional skills required to thrive in the workforce, get involved with hands-on projects, expand your network, or even explore other industries. It's your opportunity to enhance your professionalism and develop key, transferable skills that can be used in your future workplace.

The Placements:



A stepping stone for a wide range of careers

Whether you are aiming for a job in, or outside of the lab, in research or commercial areas, opportunities with a Bachelor of Biomedical Science from Monash are endless. Here's a taste of where your degree could take you after graduation.



Pathways

Choose one of the following to further your career opportunities. Note: Entry requirements must be met*.

 BACHELOR OF BIOMEDICAL SCIENCE	Research (Honours/PhD)	
	Master of Biomedical Sciences	2 years*
	Master of Biotechnology	1 or 2 years [^]
	Master of Clinical Embryology	1 year intensive
	Master of Dietetics	2 years
	Master of Forensic Medicine	3 years
	Master of Nursing Practice	2 years
	Master of Occupational Therapy	2 years
	Doctor of Physiotherapy	3 years
	Master of Public Health	1.5 or 2 years*

*Successful completion of a Monash University Bachelor of Biomedical Sciences degree with 36 credit points of specified public health units may provide a pathway to the M6024 Master of Public Health (entry level 2).

[^]Depending on prior qualifications, this course can be completed in one or two years (full time).




I undertook a research unit with the Baker Heart and Diabetes Institute. My project involved categorising the interactions of a novel drug with a receptor of interest that could allow the development of a drug to treat secondary injuries when someone has a heart attack.

As part of my research, I got to spend 1-2 days a week up at the Alfred Hospital where I was conducting my own experiments with these drugs. I absolutely adored this research unit as not only did it allow me to get lab experience, I also had the opportunity to get first-hand experience in presenting my research and findings to my peers, like an actual biomedical researcher.”


ALEXANDER DILLON

Bachelor of Biomedical Science (2019)

 Caulfield

 3 years


Time commitment
Approximately 24 contact hours per week and 24 self-directed study hours per week.

 February

DEGREE AWARDED

Bachelor of Health Sciences

SUBJECT PREREQUISITES

 English

COURSE CODE: M2014 **CRICOS CODE:** 068365J



For detailed entry requirements, scan here:

[or click here](#)



Watch where a health sciences or public health degree can take you

youtu.be/03ISmVxsYPY

Bachelor of HEALTH SCIENCES

Are you passionate about health? Do you want to contribute to addressing real health challenges at the individual or community level? If so, health sciences at Monash is for you.

Our course will provide you with a sound foundation in health sciences and a broad overview of healthcare, and skills in identifying, investigating, analysing and assessing health issues.

CAREER OPTIONS

Ready for a rewarding career?

The health care job market is rapidly expanding. You'll graduate work-ready and prepared for a wide range of rewarding career opportunities in areas like health promotion, clinical research and even forensic science.

Other areas include:

- Healthcare marketing
- Health education
- Health promotion
- Government policy
- Clinical research
- Occupational and environmental health administration/management.



Biostatistics



Education



Global Health



Government



Health Communication



Health Promotion



Occupational and Environmental Health



Research

PATHWAYS

 BACHELOR OF HEALTH SCIENCES	Research (Honours/PhD)	
	Master of Dietetics	2 years
	Master of Forensic Medicine	3 years
	Master of Nursing Practice	2 years
	Master of Occupational Therapy Practice	2 years
	Master of Public Health	1.5 or 2 years*
	Master of Social Work	2 years

*Successful completion of a Monash University Bachelor of Health Sciences degree with 36 credit points of specified public health units may provide a pathway to the M6024 Master of Public Health (entry level 2).

COURSE STRUCTURE (Indicative)

Course progression

Here's an example of what your studies could look like.

YEAR 1

Semester 1	Foundations of anatomy and physiology for health practice 1	Introduction to research and evidence	Introduction to public health	Elective
Semester 2	Foundations of anatomy and physiology for health practice 2	Human health and disease	The Australian health care system	Elective

YEAR 2

Semester 1	Emerging challenges in health	Health and the human lifespan	Health promotion and disease prevention	Elective
Semester 2	Foundations of epidemiology	Elective	Elective	Elective

YEAR 3

Semester 1	Social and behavioural sciences in public health	Communicable disease prevention and control	Elective	Elective
Semester 2	Principles of forensic medicine	Translating research into practice	Elective	Elective

■ Foundation
 ■ Health Sciences
 ■ Electives (such as nutrition science, pharmacology, forensic medicine)

FLEXIBLE LEARNING

Our passionate teaching staff, who have research partnerships with the Alfred Hospital, are at the forefront of public health. Access to these experts in the course provides a unique opportunity for you to experience innovative specialisation areas including forensic medicine, translational research (translating data to patients), and social and behavioural sciences (use of technology in health from a cultural point of view).

You'll also be able to explore electives in other disciplines (psychology, biology, chemistry, nutrition, social work, pharmacology and others), affording you the flexibility to build your own degree and sample multiple areas of interest to you.

📍 Clayton

🕒 5 years

Time commitment
Approximately 26 contact hours and 22 online and self-directed study hours per week.

➔ February

DEGREE AWARDED

Bachelor of Medical Science and Doctor of Medicine

SUBJECT PREREQUISITES

✓ English

✓ Chemistry

SPECIAL REQUIREMENTS

(See 4)



COURSE CODE: M6011 **CRICOS CODE:** 088889D



For detailed course requirements, scan this code or visit our **website**.

Dean's Rural List (DRL) and Dean's Indigenous List (DIL)

If you come from a regional or rural background, be sure to find out about the Dean's Rural List (DRL) – a special entry scheme that can help you gain entry into the Monash undergraduate medicine course.

Find out more at:

🔗 monash.edu/medicine/drl

Also, if you identify as an Australian Aboriginal and/or Torres Strait Islander, Monash University will support you in reaching your goals through our Dean's Indigenous List (DIL).

Find out more at:

🔗 monash.edu/medicine/drl

Bachelor of MEDICAL SCIENCE + Doctor of MEDICINE

Our course allows you to start your medical studies from day one and equips you with the knowledge, skills and attributes to begin your career as a medical practitioner. We deliver a world-class course with a comprehensive and interdisciplinary approach to medical training.

With research-led teaching, modern facilities and challenging practical training, we're committed to developing accomplished graduates.

In this course you'll get the opportunity to undertake clinical experience in some of the country's most highly recognised centres of medical care and expertise.

Bonded Medical Program (BMP)

28.5% of Commonwealth Supported Places (CSP) places offered will be BMP places. By accepting a BMP place, you'll be required to sign a contract provided by the Commonwealth Government.

At completion of your training, you'll be required to work in a designated area of medical need for a period of three years.

Extended Rural Cohort (ERC)

The Extended Rural Cohort (ERC) within the Bachelor of Medical Science and Doctor of Medicine (MD) gives you the opportunity to spend extended time in regional and rural Victoria. After the first two years at Clayton with other medical students, you'll undertake clinical training within hospitals and community-based practices in rural and regional settings across the north-west of the state or in Gippsland.

Small class sizes, friendly and committed clinical teachers and ample opportunity for hands-on clinical experience make this an exciting program.



For detailed entry requirements to ERC, scan this code or visit our **website**.

OUR APPROACH TO LEARNING

Our innovative teaching sessions provide you with a range of learning modes. Lectures, seminars, workshops, tutorials and simulation sessions are designed to suit the content being covered. These sessions are delivered from content experts within the university, as well as clinicians and researchers. Below is an example of one of the pre-clinical learning themes:

Pre-clinical years

Scientific Basis of Medicine – Curriculum Road Map

Incorporating: biochemistry, pharmacology, anatomy, physiology, microbiology, histopathology disciplines.

CELLS

Basics
Cell-to-cell communication
Cellular errors: normal cycle and mutation
Cell invaders: viruses, bacteria, fungi

Med 1100

TISSUES

Necrosis, apoptosis, fibrosis, degeneration, regeneration,
MSK systems – muscle, nerve, bone, upper limb and lower limb

NORMAL ORGANS AND SYSTEMS

Cardiovascular, Respiratory, GI, endocrine and diabetes,
renal reproductive, haematology, immunology, neurology

Med 2100

CLINICAL PLACEMENTS

You'll undertake clinical placements in years three, four and five in metropolitan and rural clinical schools and their related sites.

Year three



Medicine



Surgery

Year four



Children's Health



General Practice

Year five



Aged Care



Emergency Medicine



Psychiatry



Women's Health



Patient Safety



Medicine



Scholarly Intensive Placement (SIP)



Surgery



Metropolitan Melbourne



Rural Victoria

Eastern Health Clinical School

Central Clinical School

School of Clinical Sciences at Monash Health

School of Rural Health



GO RURAL

Talking Rural Placements - A Student's Perspective

youtu.be/8us124ECUAA

RANKED

36

IN THE WORLD FOR MEDICINE

2021 QS World University Rankings by Subject.



Watch how you can learn clinical skills at Monash Rural Health

youtu.be/U28dPzZipNg

📍 Clayton, Peninsula

🕒 3 years

Time commitment
Approximately 20 contact hours and
20 self-directed study hours per week.

➔ February

DEGREE AWARDED

Bachelor of Nursing

SUBJECT PREREQUISITES

✓ English

✓ Mathematics

SPECIAL REQUIREMENTS

(See 4)



COURSE CODE: M2006 **CRICOS CODE:** 75119J

Bachelor of NURSING

The Bachelor of Nursing will give you the knowledge and clinical skills to deliver high quality nursing care. You'll also have the scope to provide care in multiple settings, including acute care, primary health care, mental health and health promotion.

Pathways to Nursing

Diploma of Tertiary Studies (DoTS) (Nursing) pathway. If you successfully complete all units in the diploma with at least a 55% average, you will gain entry into the second year of nursing at Peninsula campus (only).

🔗 monash.edu/study/course/D0502

Scholars Program

Our Nursing Scholars Program offers high-performing students expert mentoring, special activities and seminars. These benefits are your reward for your effort and academic performance and they are sure to support and enhance your experience in this degree.

- An academic mentor will provide individual guidance and academic counselling
- Focuses on research and leadership development
- Provides a pathway to more advanced learning and engagement in nursing research.



For detailed course requirements, scan this code or visit our **website**.

CAREER OPTIONS



Bioscience



Chronic illness



Complex/high acuity



Law and ethics

RANKED

15

**IN THE WORLD
FOR NURSING**

2021 QS World University
Rankings by Subject.



Mental health



Nursing –
medical & surgical



Nursing –
family/paediatric



Pharmacology



Population
and society



Primary health

CLINICAL LEARNING ENVIRONMENT

Learn on the latest equipment in our Clinical Learning Environments with sophisticated manikins for use in CPR, AED defibrillators for CPR resuscitation simulation and Dopplers for simulating neonatal heart rhythms and listening to vascular systems. From learning to use an AED defibrillator to mastering an IV pump, our programs ensure you gain clinical confidence before heading out on placement.

- Prepares you for a life on the healthcare front-line
- Reflects modern day healthcare environment in looks, feel and sounds
- Enforces dress code and behaviours expected in the 'real world'. You're expected to wear a uniform and to conduct yourself professionally
- Utilises actor patients for authentic learning experience
- Simulation manikins give you 'real-life' clinical scenarios



In my three years of nursing, I've already experienced so much. I've worked in an oncology ward where I developed empathy for patients, heard their stories and provided care and assurance to not only patients but to their families as well. I've worked in a mental health facility where I was exposed to a whole range of mental disorders. I learnt to assess patients mentally through the use of concise communication and provide care to those who are mentally disadvantaged. I've had the opportunity to work in a general medical/surgical unit where I was caring for all types of patients with all types of illnesses and complications. I was involved in many emergency procedures, and even found myself involved in working with other medical professionals to make life-changing medical decisions."

JAHRED DOUMIAS
Bachelor of Nursing (2019)



**PROJECTED
SHORTFALL OF
APPROXIMATELY**

85,000

NURSES BY 2025

Under current settings*

**PROJECTED
SHORTFALL OF
APPROXIMATELY**

123,000

NURSES BY 2030

Under current settings*

**PREDICTED
WORKFORCE
SHORTFALL**

Australia's demand for nurses will significantly exceed supply.


*Health Workforce Australia 2014: Australia's Future Health Workforce – Nurses Detailed



Watch how nurses check for vital signs

youtu.be/DN4E4VunBAo

 Peninsula

 4 years


Time commitment
Approximately 20 contact hours and
20 self-directed study hours per week.


 February

DEGREE AWARDED

Bachelor of Nursing and Bachelor of
Midwifery (Honours)

SUBJECT PREREQUISITES

 English

 Mathematics

SPECIAL REQUIREMENTS

(See 4)



COURSE CODE: M3007 **CRICOS CODE:** 089708F



For detailed course
requirements, scan
this code or visit
our **website**.

Bachelor of **NURSING** + Bachelor of **MIDWIFERY** (Honours)

Midwives and nurses hold a special place in communities throughout the world. A combined midwifery and nursing degree will make you highly employable in many practice settings, especially rural and remote areas where multi-skilled practitioners are highly valuable.

In addition to your nursing qualification, as a midwife, you'll provide care to mothers and babies. You'll assist patients during pregnancy, labour, birth and the postpartum period, including emergencies.

Clinical learning environments

Learn on advanced equipment in our Clinical Learning Environment at Peninsula. It is equipped with manikin babies from neonates to approximately 18 months, birthing beds for use with our midwifery birthing manikin, humidicribs and resuscitaire.

CAREER OPTIONS (In addition to options on page 14)



Pregnancy and
Post Natal care



Normal /complex
birthing



Care of healthy
and sick babies



Pharmacology
(maternity care)



Mental health
(maternity care)



Women-centred
care





📍 Clayton

🕒 3 years

Time commitment
Year 1 – Approximately 24 contact hours per week.
Year 2 – Approximately 20 contact hours per week.

➔ February

DEGREE AWARDED

Bachelor of Nutrition Science

SUBJECT PREREQUISITES

✓ English

✓ Chemistry or Biology

COURSE CODE: M2001 **CRICOS CODE:** 075117M

Bachelor of NUTRITION SCIENCE

We all have to eat! There are a lot of public opinions about food and food intake, and this course equips you to become an expert in the area of food and nutrition. You'll tap into the multi-faceted discipline of human nutrition and gain an appreciation of the broad scope of food in society. You'll gain in-depth knowledge of nutritional and biomedical science, and understanding of the role of nutrition in health and disease and the increasing importance of food sustainability and food security for the future of human health. It's an accredited course with the Association for Nutrition (AfN) in the United Kingdom. On completion of the course students will be eligible to apply for the Master of Dietetics program.

Scholars Program

If you're a high-achieving student you can apply for our Nutrition Science Scholars. When you complete your degree with an average grade of credit or above you're guaranteed entry into

our Master of Dietetics program accredited by Dietitians Australia. Visit monash.edu/study/course/M6002



For detailed course requirements, scan this code or visit our **website**.



INDUSTRY PLACEMENT OPTION

11 weeks of work-based placement, where you'll gain professional experience at companies like Fonterra and Nutrition Australia, or in community settings gathering food system intelligence or evaluating programs like the Stephanie Alexander Kitchen Gardens.

CAREER OPTIONS



Food regulation



Food safety



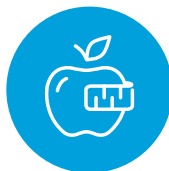
Food research



Dietitian (extra study)



Health promotion



Nutritionist



Nutrition educator



Public health

PATHWAYS

 <p>BACHELOR OF NUTRITION SCIENCE</p>	Master of Dietetics	1.5 years
	Master of Public Health	1.5 or 2 years*
	Master of Occupational Therapy Practice	2 years
	Master of Food Science and Agribusiness	2 years
	Research (Honours/PhD)	

*Depending on prior qualifications, this course can be completed in one and a half or two years (full time).



WHY MONASH?

Study abroad opportunities include UK, Norway and Germany.

You have the option to do a nutrition-focused research project in your final year.

Access to:

- industrial kitchen facilities
- the Nutrition and Exercise clinics
- the nutrition and exercise laboratory and body composition suite will help enrich your nutrition knowledge.



Watch where a nutrition science or dietetics degree can take you

youtu.be/lz-h5kle8oE

📍 Peninsula

🕒 4 years

Time commitment
Approximately 24 contact hours and
24 self-directed study hours per week.

➔ February

DEGREE AWARDED

Bachelor of Occupational Therapy
(Honours)

SUBJECT PREREQUISITES

✓ English

SPECIAL REQUIREMENTS

(See 4)



COURSE CODE: M3001 **CRICOS CODE:** 082509C

Bachelor of OCCUPATIONAL THERAPY (Honours)

Occupational therapists (OTs) work with people of all ages to address issues they may have in relation to participation in everyday activities and occupations. This could be due to illness, physical disabilities, psychological or emotional difficulties, developmental delay, the effects of ageing, and life transitions such as retirement.

You'll gain over 1,000 hours of practical experience working with individuals, groups and communities through:

- Clinical placements
- Community placements
- School settings.

Global career opportunities

You'll graduate as a qualified occupational therapist, ready to work anywhere in the world, as our course is accredited by the Occupational Therapy Council (Australia and New Zealand) Ltd. and is recognised by the World Federation of Occupational Therapists.



For detailed course requirements, scan this code or visit our **website**.

CAREER OPTIONS



Community health services



Education services



Forensic mental health councils



Hospitals



Mobile support services



OH&S services



Private practice / consultancy



Rehabilitation services



Occupational therapy provides you with a unique set of skills that you can apply wherever your interests lie – you just have to be creative!

I hope to practice in a role where I can promote health and wellbeing in the community, whether that is in the hospital or in a community health service. I'd also like to work in rehabilitation where I can support stroke survivors with upper limb re-training, provide therapeutic activities and education to enable them to live independently."

SUHASHI WICKRAMASINGHE
Bachelor of Occupational Therapy (Honours) (2019)

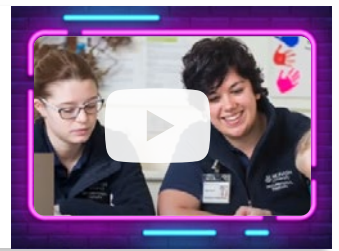


UNDERSTANDING OCCUPATIONAL THERAPY

Occupational therapists are innovators, advocates and problem solvers. As an OT you have the opportunity to work in the following areas where you might contribute to helping people throughout a range of life stages:

Watch where an occupational therapy degree can take you.

youtu.be/r8d39lcxZ5w



Paediatrics

Supporting children and their families to reach their full potential is incredibly rewarding. Working in paediatrics, you're assisting children to develop the skills they need at home, school or play.

Acute care

In hospitals, OTs work with people who have a range of health conditions, to assess their needs and develop skills and strategies to enable their safe discharge.

Mental health

Sometimes people experiencing mental health conditions need ways to overcome challenges in daily life. Mental health OTs work with them to come up with strategies for dealing with stress, taking part in social activities or reconnecting with the community.

Rehabilitation

When someone is recovering from an illness or injury, they might need the support of an OT to get back to home, work or community life.

Home Modifications

Everyone should feel safe at home. An OT can help make homes more accessible by recommending physical modifications, equipment or assistive technology.

Aged care

As we age, it is important to stay active and engaged in community life. OTs work with older people to prevent injury (like falls), promote their health and remain involved in their activities.



📍 Peninsula

🕒 3 years

Time commitment
Approximately 24 contact hours and
24 self-directed study hours per week.

➔ February

DEGREE AWARDED

Bachelor of Paramedicine

SUBJECT PREREQUISITES

✓ English

✓ Mathematics

SPECIAL REQUIREMENTS

(See 4)



COURSE CODE: M2011 **CRICOS CODE:** 094996F



For detailed course requirements, scan this code or visit our **website**.

Bachelor of PARAMEDICINE

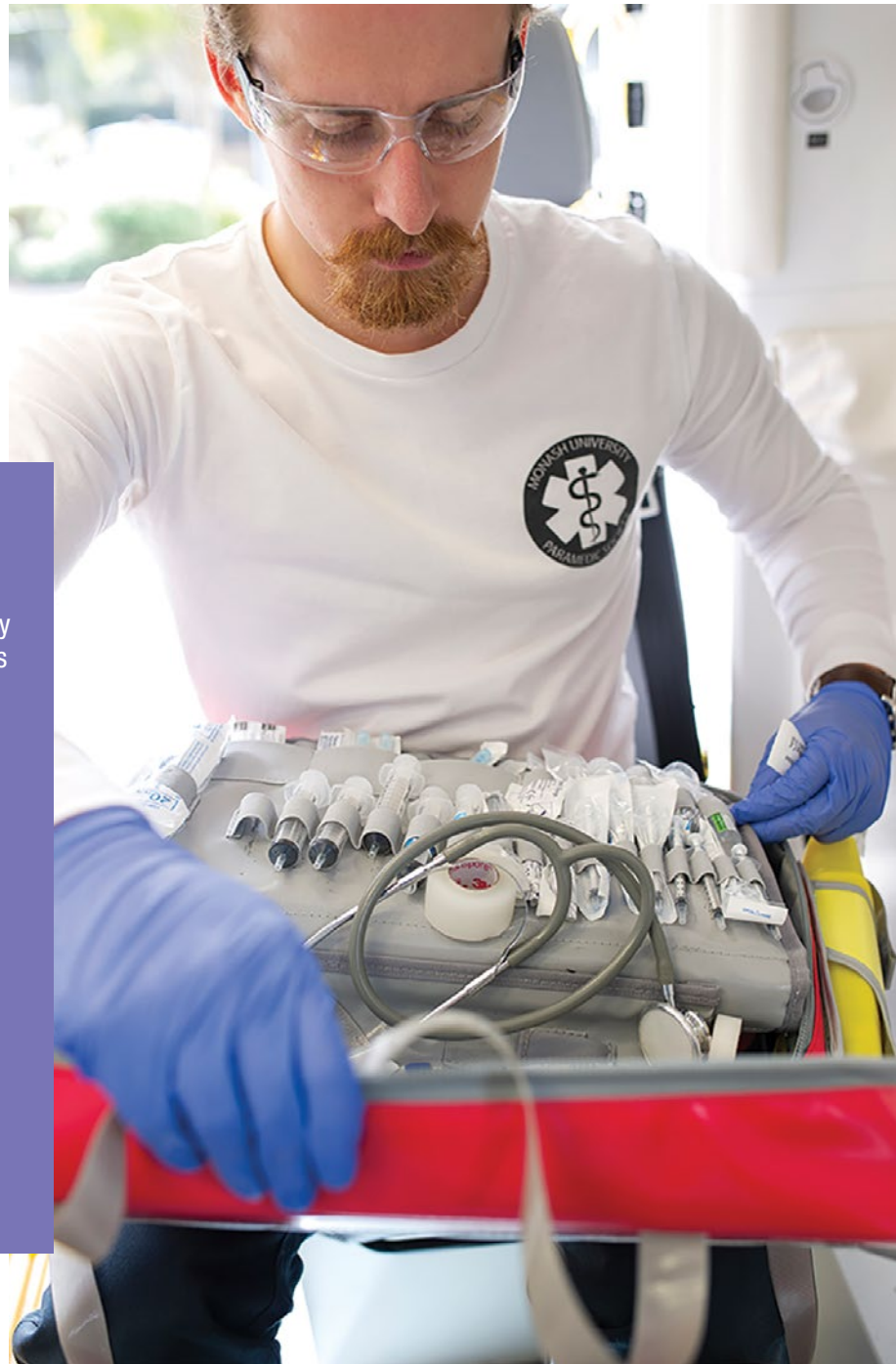
Paramedics are first responders in an emergency and their work saves lives. They assess, treat and transport patients in emergencies and health-related events in the community. Paramedics also cooperate with other emergency services to respond to mass-casualty incidents in a range of situations.

You'll learn about the role of paramedics in the community and undertake practical and highly focused studies in the following areas of paramedic management:

- Trauma conditions
- Respiratory conditions
- Mental-health conditions
- Complex medical conditions
- Maternal and neonatal health conditions.

Hands-on paramedic experience from Semester 1

You'll complete 60 days of placement across your degree, working in clinical and community settings with Ambulance Victoria, Emergency Services Telecommunications Authority (ESTA) and in emergency departments of Victoria's major hospitals.



When I was deciding which university was the best place to study paramedicine, I sought to speak to as many paramedics as I could.

Throughout our conversations, it was made clear the outstanding quality of the students and graduates that Monash University produces. These opinions were only strengthened and regularly echoed by the paramedics I encountered during my clinical placements.

Now that I have graduated, I can honestly say I have never felt more prepared to begin a career as a paramedic.”

NIALL MEHMED

Bachelor of Paramedicine (2019)



WHY BECOME A PARAMEDIC?

- A challenging and rewarding occupation
- Diverse career paths
- Excellent basis for further study
- Sense of achievement
- Helping the community
- Flexible working environment
- Global career opportunities

ADVANCED STUDIES



Master of Specialist
Paramedic Practice



Master of
Nursing Practice



Watch how paramedics
respond to a car accident

youtu.be/NUSfkoSwYBs

Peninsula

4 years

Time commitment
Approximately 24 contact hours and
24 self-directed study hours per week.

February

DEGREE AWARDED

Bachelor of Physiotherapy (Honours)

SUBJECT PREREQUISITES

English

Any two of Biology,
Chemistry, Mathematics
(Methods or Specialist)
or Physics

SPECIAL REQUIREMENTS

(See 4)



COURSE CODE: M3002 CRICOS CODE: 064804A



For detailed course requirements, scan this code or visit our **website**.

Bachelor of PHYSIOTHERAPY (Honours)

Physiotherapists use exercise, movement analysis, manual therapy and specialist techniques to restore, improve and promote health.

Equip yourself to flourish in one of the most versatile and in-demand of the healthcare professions, with the Monash Bachelor of Physiotherapy (Honours).

This course gives you a high quality academic education, intensive training in relevant clinical environments, and the chance to study with expert physiotherapists and leading researchers.

In the later years, you move to the clinical setting, where your knowledge and skills are put to practice in the delivery of physiotherapy services under the supervision of experienced physiotherapists. This clinical education may occur in diverse settings across metropolitan and rural health services.

Start learning about physiotherapy from year 1, week 1

You'll have over 1000 hours of hands-on practice during clinical placement at places like Monash Health, Peninsula Health or the Royal Children's Hospital. You'll also apply your skills in our practice labs and rehabilitation gym.

Discover your dream job

Test-drive a range of physiotherapy careers in various practice settings including hospitals, rehabilitation centres, private practices and sports medicine clinics.

Advanced studies

Master of Advanced Paediatric Physiotherapy Practice.

CAREER OPTIONS



Paediatrics



Private practice



Public Health



Rehabilitation



Research



Sports physiotherapy

TAKE A VIRTUAL TOUR OF OUR PRACTICE LABS

You'll apply your skills in our practice labs and rehabilitation gym.



Scan this code or
https://youtu.be/aUs_I56P4WA





Highlights of studying Physiotherapy?

The small cohort that becomes like a big family (affectionately known as the physio-pham). The passionate teaching staff are leaders in their respective fields, so you are hearing about cutting-edge research and developments in physiotherapy. From day one, you're immersed in physiotherapy-oriented content, along with interactions with real and simulated patients making your learning interesting.

There are also free Australian Physiotherapy Association (APA) events, and of course the annual physio ball.”

JOSIAH CRISPIN

Bachelor of Physiotherapy (Honours) (2019)

CAREER OPPORTUNITIES

After completing the degree, students will be eligible to apply for registration to the Physiotherapy Board of Australia, enabling independent practice.



See how physiotherapists test balance and stability

youtu.be/QPA1YF_Fq3c

📍 Clayton

🕒 4 years

Time commitment
A full time study load requires approximately 16 contact hours and 32 self-directed study hours per week.

➔ February

DEGREE AWARDED

Bachelor of Psychology (Honours)

SUBJECT PREREQUISITES

✅ English

COURSE CODE: M3005 **CRICOS CODE:** 055711C

CAREER OPTIONS

- Child psychology
- Clinical psychology
- Health psychology
- Organisational psychology
- Counselling
- Rehabilitation
- Research
- Market research
- Psychotherapist
- Policy and administration/government
- Education



For detailed course requirements, scan this code or visit our **website**.



DID YOU KNOW?

Our Summer Internship programs have a choice of five streams. You'll also have the opportunity to gain skills in interpersonal communication, research and writing, programming and statistics, and project management.

monash.edu/medicine/psychology-internship

Bachelor of PSYCHOLOGY (Honours)

Explore your passion for understanding human cognition and behaviour with a Bachelor of Psychology.

Required study includes the core sequence of units accredited by the Australian Psychology Accreditation Council (APAC) and neuroscience related units designed to give you a deep understanding of the biological basis of human cognition and behaviour.

You'll also have the opportunity to gain skills in interpersonal communication, research and writing, programming and statistics, and project management.

Make your own scientific discoveries

From your first year, you'll have the opportunity to gain hands-on research experience, be mentored by our expert staff, and access research facilities, including a sleep and circadian medicine lab.

PSYCHOLOGY PROGRAMS

Our Bachelor's degree includes the honours year.

MEDICINE, NURSING AND HEALTH SCIENCES

Bachelor of Psychology (Honours)[^]

With a focus on neuroscience, our course will equip you with exceptional knowledge of brain function and the key skills required to go into clinical pathways.

You'll also have elective options that focus on related areas including counselling, public health, criminology, and mental health.

OTHER MONASH FACULTIES

- Bachelor of Arts
- Bachelor of Science

ALTERNATIVE PATHWAYS

Graduate Diploma in Psychology[#]

FOURTH YEAR PSYCHOLOGY

- Honours in Psychology
- Graduate Diploma of Psychology Advanced (online)
- Graduate Diploma of Professional Psychology

GRADUATE DEGREES

- Doctor of Philosophy (Clinical Psychology)
- Doctor of Philosophy (Clinical Neuropsychology)
- Master of Educational and Developmental Psychology (two years – Monash Education)
- Master of Professional Psychology (one year – Monash Education)^{*}

[^] You must complete 144 credit points and achieve a minimum of a distinction (70 per cent) average in PSY3041, PSY3051, PSY3032 and PSY3062 in order to proceed to the fourth year of study.

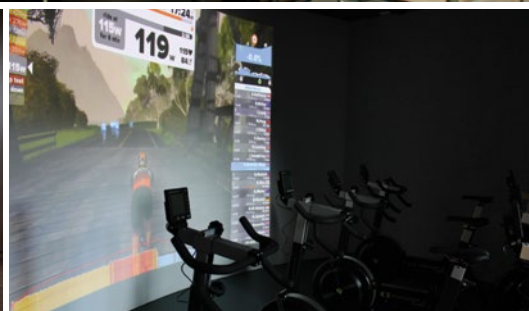
[#] For students who have previously completed a bachelor's degree in another discipline.

^{*} Following graduation, you'll be eligible to undertake one year of supervised generalist practice – you'll then progress to full registration as a psychologist.



BrainPark – co-located at Monash Biomedical Imaging – is a world-first neuroscience research clinic dedicated to creating better outcomes for people with compulsive behaviours; from unhealthy habits through to addictions and obsessive compulsive disorder.

BrainPark houses indoor and outdoor gymnasiums, a spin (cycle) room, an exercise physiology room, two virtual reality studios, brain training pods, clinical assessment rooms, and a meditation/ yoga studio and outdoor garden.



CAREER OPTIONS

With a focus on neuroscience, our course will equip you with exceptional knowledge of brain function and the key skills required to go into clinical pathways.



Addiction



Attention, memory and consciousness



Brain Injury and Rehabilitation



Neurodevelopment and Neurodegeneration



Psychopathology: Prevention and Intervention




Sleep



Where can a psychology degree take me?

youtu.be/qB638odkKLO

 Caulfield

 3 years


Time commitment
Approximately 24 contact hours per week and 24 self-directed study hours per week.


 February

DEGREE AWARDED

Bachelor of Public Health

SUBJECT PREREQUISITES

 English

 Mathematics

SPECIAL REQUIREMENTS

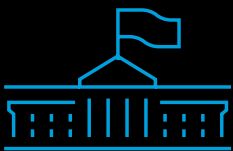
(If you undertake placement electives – see 4)



COURSE CODE: M2012 **CRICOS CODE:** 094997E



For detailed course requirements, scan this code or visit our **website**.



Experience public health in the real-world

You'll have opportunities to apply your knowledge by completing a professional placement with a health organisation, or participate in public health research with one of our partners, like Alfred Health.

Bachelor of PUBLIC HEALTH

Are you interested in the big picture? From promoting good health, through to preventing disease and managing illness and disability, public health focuses on populations and communities rather than individuals. You'll learn how to develop, implement and evaluate programs and policies to promote health and prevent disease and injury, as well as undertake public health research. This course has a global orientation, examining both Australian and international health challenges.

Future career options

With a Bachelor of Public Health, you can explore a variety of rewarding careers where you'll make a difference to health within the community.

Our graduates find rewarding opportunities in the following public health areas:

- Health promotion
- Epidemiology
- Disease surveillance and monitoring
- Data analysis
- Outbreak and epidemic planning and management
- Disease prevention
- Practice and policy
- Health resource and program planning and management

Also consider...

- Medibank and TAC graduate programs
- Sales and marketing within health organisations
- Working in non-profit and non-government organisations (NGOs).

PATHWAYS

 BACHELOR OF PUBLIC HEALTH	Master of Public Health*	1.5 years
	Master of Clinical Research	1.5 years
	Master of Nursing Practice	2 years
	Master of Occupational Therapy Practice	2 years
	Master of Social Work	2 years
	Research (Honours/PhD)	

*Successful completion of the Bachelor of Public Health may provide a pathway to the M6024 Master of Public Health (entry level 2).

COURSE STRUCTURE (Indicative)

Course progression

Here's an example of what your studies could look like.

YEAR 1

Semester 1	Foundations of anatomy and physiology for health practice 1	Introduction to research and evidence	Introduction to public health	Introduction to communicating health
Semester 2	Foundations of anatomy and physiology for health practice 2	Human health and disease	The Australian health care system	Global health: Opportunities and challenges

YEAR 2

Semester 1	Emerging challenges in health	Health and the human lifespan	Health promotion and disease prevention	Culture, society and health
Semester 2	Foundations of epidemiology	Foundations of biostatistics	Choose one of: Health, law and ethics Health program planning	Choose one of: Treatments and technologies Introduction to health policy and politics

YEAR 3

Semester 1	Public health and clinical research methods	Disease prevention and control	Choose one of: Environmental determinants of health and disease Health program evaluation Social and behavioural sciences in public health	Choose one of: Environmental determinants of health and disease Health program evaluation Social and behavioural sciences in public health
Semester 2	Principles of forensic medicine	Choose one of: Action in public health research Health promotion practicum Case studies in global and public health	Choose one of: Chronic disease epidemiology and control Health data management	Choose one of: Advanced biostatistics for public health Translating research into practice

■ Foundation Studies (54 credit points) ■ Public Health (90 credit points)



Through studying public health, I've loved learning about the many health challenges facing both Australia and the globe. I've also enjoyed the flexibility of my degree. Having electives each semester meant I was able to complete a minor in politics, another interest of mine. This minor really complements what I have learnt during my course where health and politics are so highly interrelated."

EMILY NELSON
Bachelor of Public Health (2019)



📍 Clayton**

🕒 3 years

Time commitment
Approximately 24 contact hours and
24self-directed study hours per week.

➔ February

DEGREE AWARDED

- Bachelor of Radiation Sciences
Only available to Domestic Students
- Bachelor of Radiation Sciences
(Informatics)

SUBJECT PREREQUISITES

- ✓ English
- ✓ Mathematical Methods (any)
or Specialist Mathematics

SPECIAL REQUIREMENTS

(See 4)



Bachelor of Radiation Sciences

COURSE CODE: M20172

Bachelor of Radiation Sciences (Informatics)

COURSE CODE: M20171 **CRICOS CODE:** 0100635



For detailed course requirements, scan this code or visit our **website**.

Bachelor of RADIATION SCIENCES

Medical radiation practice is an exciting and engaging health care field which involves the diagnosis and treatment of a range of diseases.

Studying radiation sciences at Monash will enable you to combine scientific and technical knowledge with studies in health and patient care.

CAREER OPTIONS



Administration



Cancer services



Sonography[^]



Science research



Public health



Radiation therapy*

Gain clinical experience

Experience life as a radiation therapist from second year, with clinical placements in teaching hospitals and private radiation therapy centres across Australia.

Immerse yourself in the latest technology

Learn to use radiation therapy planning software and participate in 3D treatment simulations to practice technical skills.

PATHWAYS

Pathway to becoming a registered radiation therapist

On completion, you may be eligible for direct entry into our Master of Radiation Therapy and can qualify as a radiation therapist in just 18 months, without needing an internship or professional development year.

 BACHELOR OF RADIATION SCIENCES	Master of Radiation Therapy (only available to Domestic Students)	1.5 years*
	Master of Medical Ultrasound[#]	3 years (PT)
	Master of Nursing Practice	2 years
	Master of Occupational Therapy Practice	2 years
	Research (Honours/PhD)	
	Doctor of Physiotherapy	3 years
	Master of Public Health	1.5 or 2 years*
	Master of Social Work	2 years

* Successful completion of the Bachelor of Radiation Sciences (BRadSc), with a credit average, may provide a pathway to the M6004 Master of Radiation Therapy (MRT) program with advanced standing. Upon successful completion of the MRT, you will be eligible for general registration as a radiation therapist in Australia. The BRadSc program may also provide a pathway to the M6005 Master of Medical Ultrasound.

** Clayton primarily with some first-year level units only available at Caulfield.

[^] Extra study required.

[#] This course is offered mostly online. See course entry for more information.

Bachelor of **RADIATION SCIENCES** (Informatics)

Through our Bachelor of Radiation Sciences (Informatics), you'll develop scientific and technical expertise, alongside a broad understanding of medical radiation science, IT systems and data management.

With opportunities to immerse yourself in the latest technology, you'll learn how to use data visualisation and medical imaging software, design databases in Oracle and code Java applications. Get ready to be at the forefront of the next IT-lead breakthrough in health.



**Watch where a
medical imaging
or radiation
sciences degree
can take you**

youtu.be/qWocyrvic0s



📍 Clayton

🕒 4 years

Time commitment
Approximately 26 contact hours per week, but varies year-to-year depending on clinical placements.

➔ February

DEGREE AWARDED

Bachelor of Radiography and Medical Imaging (Honours)

SUBJECT PREREQUISITES

- ✓ English
- ✓ Mathematics: Methods or Specialist
- ✓ Biology or Physics

SPECIAL REQUIREMENTS

(See 4)



COURSE CODE: M3006 **CRICOS CODE:** 080032G

Bachelor of RADIOGRAPHY AND MEDICAL IMAGING (Honours)

Radiographers are health professionals and play a pivotal role in the patient journey through the creation of medical images using a variety of imaging modalities such as x-ray machines, CT scanners and magnetic resonance imaging. Radiographers work in collaboration with radiologists and other specialist medical practitioners.

Radiography and medical imaging are at the heart of a modern health service. Radiographers require great communication and team-focused skills and the capacity to combine knowledge of technology with the delivery of patient-centred care.

Pathway to specialist study

Our graduates are eligible for credit towards a range of postgraduate courses including the Graduate Certificate of X-ray Image Interpretation; Graduate Certificate of MRI, the Graduate Diploma of Medical Ultrasound and the Master of Advanced Medical Imaging Practice that prepares you for leadership and research roles in CT, MRI or general radiography.

Teaching and learning approaches

- Integrating Science And Practice (ISAP)
- Personal Learning and Assessment System including clinical ePortfolio: PebblePad
- Clinically relevant cultural, ethical and moral scenarios using Value Exchange.



For detailed course requirements, scan this code or visit our **website**.



DID YOU KNOW?

As a radiographer, you will need strong communication skills to liaise with other health care professionals and patients in clinical settings.

STAND OUT FROM THE CROWD

You'll have the opportunity to complete a research project, and publish and present your work at conferences.

CAREER OPTIONS

Radiographers use a wide variety of imaging modalities to create diagnostic images for analysis and interpretation and information for the patient's pathway of care.



General Radiography

Including trauma, paediatrics, mobile imaging, dental imaging, fluoroscopy, digital angiography, mammography, bone densitometry.



CT scanning

Further study recommended to assume a leadership role in the modality.



Ultrasound

Sonographer (following additional graduate study).



MRI

Further study recommended to become a specialist practitioner.



Step out of your comfort zone and jump at any opportunity to learn, as the radiographers are always happy to impart their knowledge to keen and eager students. Don't be afraid to ask questions, especially during clinical placements.

Monash has exposed me to many fields within medical imaging, allowing me to have a better idea of where I would like to take my career even before graduating. I'm really interested in trauma and paediatric imaging and hope for the opportunity to further my skills in these areas."

ALEXIS CHUA

Bachelor of Radiography and Medical Imaging (2018)

Watch a radiographer's everyday life

youtu.be/R9r3PDC4XgQ





**Monash Medicine, Nursing
and Health Sciences**

monash.edu/medicine

INSTAGRAM

@monash_mnhs

TWITTER

@monash_fmnhhs

YOUTUBE

youtube.com/MonashUniFMNHS

WANT TO KNOW MORE?

There's lots of information to help you but sometimes the challenge is working through it all.

Visit us at one or more of our events and talk to our staff, current students and graduates – it's a great way to get a taste of a career that interests you.

Inside Monash Seminar Series

monash.edu/inside-monash

Open Day

monash.edu/open-day

Information about VTAC

www.vtac.edu.au

MONASH UNIVERSITY

monash.edu

FIND A COURSE

monash.edu/study

INTERNATIONAL STUDENTS

monash.edu/study/international

FUTURE STUDENT ENQUIRIES

**Australian citizens, permanent residents
and New Zealand citizens**

T 1800 MONASH (666 274)

E future@monash.edu

monash.edu/study/contact

International students

T Australia freecall: 1800 MONASH (666 274)

T +61 3 9903 4788 (outside Australia)

E study@monash.edu

