



TEACHING

**2022 UNDERGRADUATE
COURSE GUIDE**

WHY STUDY EDUCATION AT MONASH?

There is always a demand for excellent teachers. Whether you choose to specialise in early childhood, primary or secondary education – or a combination of these – with Monash you'll graduate ready for a successful career.



My students are happy and I am too.”

LUCAS LI

Bachelor of Education (Honours) in
Primary and Secondary Education
2018 Graduate



Watch Lucas's story by scanning the code or heading to

YouTube: youtu.be/ZhORzgmMaLO or

Youku: bit.ly/2KAE1xl



CONTENTS

| | |
|---------------------------------------|---|
| Why Monash? | 1 |
| Choose your specialisation | 2 |
| Course information and single degrees | 4 |
| Double degrees | 5 |
| Professional experience | 6 |
| Entry requirements | 8 |
| Pathways and access schemes | 9 |
| How to apply | 9 |



WHY MONASH?

80+

Experience teaching placements

Put your learning into practice by completing at least 80 days of professional experience. You can stay local, head rural or overseas, you can be in a classroom or an integral part of a community program – the choices are endless. Build your confidence and gain real-world experience so you're job-ready when you graduate.

1+1

Double your potential

At Monash you can study two different kinds of teaching at the same time, further broadening your career opportunities with combinations like Primary and Secondary education in the same degree. Alternatively, you can choose to study a double degree, and combine your education studies with a degree from a different area.



Professional recognition

When you graduate, you'll have the qualifications to be a registered school teacher or a registered early childhood teacher in Australia. See page 4 for more information.



Honours puts you ahead

Whichever specialisation you choose, you'll graduate with an honours degree. With Monash, you'll be ready to take a leading role in your chosen education setting and teaching field.



Reputation for excellence

Monash Education is ranked No. 1 in Australia¹ and in the top 15 in the world².



Broaden your career opportunities

An education degree sets you up for careers in and outside of schools, with opportunities in youth and community education, publishing, government services, consulting, and so much more.

Gain a global perspective

Did you know you can do one of your professional experience placements in a school overseas?

See page 6 for more information.



¹ ShanghaiRanking's Global Ranking of Academic Subjects 2020
² QS World University Rankings by Subject 2021.

🕒 4 years¹

➔ Intake: Semester 1
(February)

💰 **CSP²** \$3,950
Full Fee \$26,100
International \$34,000
2021 fees per annum, AUD.
Fees for double degrees may vary.

Bachelor of **EDUCATION** (Honours)

CHOOSE YOUR SPECIALISATION

With the Monash Bachelor of Education (Honours), you can choose from seven specialisations. These reflect the age ranges of the students you want to teach, and you'll graduate with a degree that highlights your expertise.

| TEACH PUPILS AGED | CAMPUS | SPECIALISATION |
|--------------------|--|---|
| 0-12 YEARS | Peninsula | Early childhood and primary education Teach in early learning centres, childcare and primary school settings. |
| 5-12 YEARS | Single degree: Peninsula | Primary education – studied as a single or double degree Teach across the primary school curriculum and specialise in English and literacy, Mathematics and numeracy, or Science. Alternatively, you can also choose a double degree in your area of interest. ⁴ |
| | Double degree: Clayton³ | |
| 5-18 YEARS | Clayton | Primary and secondary education Teach across the primary school curriculum and in one secondary school specialist teaching area. |
| | Clayton | Primary and secondary inclusive education Develop specialist skills to adapt the curriculum for children with additional and special needs. Qualify to teach in primary schools and one secondary school specialist teaching area. |
| | Peninsula | Primary and secondary health and physical education Qualify as a primary school teacher with specialist skills in Health and Physical Education, as well as a secondary teacher with Health and Physical Education as your two teaching specialist areas. |
| 12-18 YEARS | Peninsula | Secondary health and physical education Teach as a secondary teacher in Health, Physical Education and one other specialist teaching area from a range of options such as English, Mathematics or Biology (including Exercise Physiology). |
| | Clayton³ | Secondary education – studied as a double degree Qualify to teach in two teaching specialist areas and graduate with two degrees. |

DOUBLE DEGREES

A double degree is a great option if you're interested in teaching but also want to gain expertise in another discipline.

At Monash, you can choose from the following double degrees with either Primary or Secondary Education: Refer to page 5 for further information.



ARTS



BUSINESS



FINE ART



MUSIC



SCIENCE

ALREADY COMPLETED A DEGREE?

If you've already completed a bachelor's degree in another discipline, then you can complete the two year Master of Teaching to qualify you as a teacher. Some specialisations are available in accelerated mode, meaning you can complete in 1.5 years.

¹ This is a 4.25-year course taken in accelerated mode, where you'll do the equivalent of 4.25 years of study in four calendar years.

² Commonwealth Supported Place

³ Education and Fine Art and Education and Business students undertake their Education subjects at Clayton, and their Fine Art and Business subjects at Caulfield.

⁴ The Science Primary specialisation is only available within the single Primary degree.



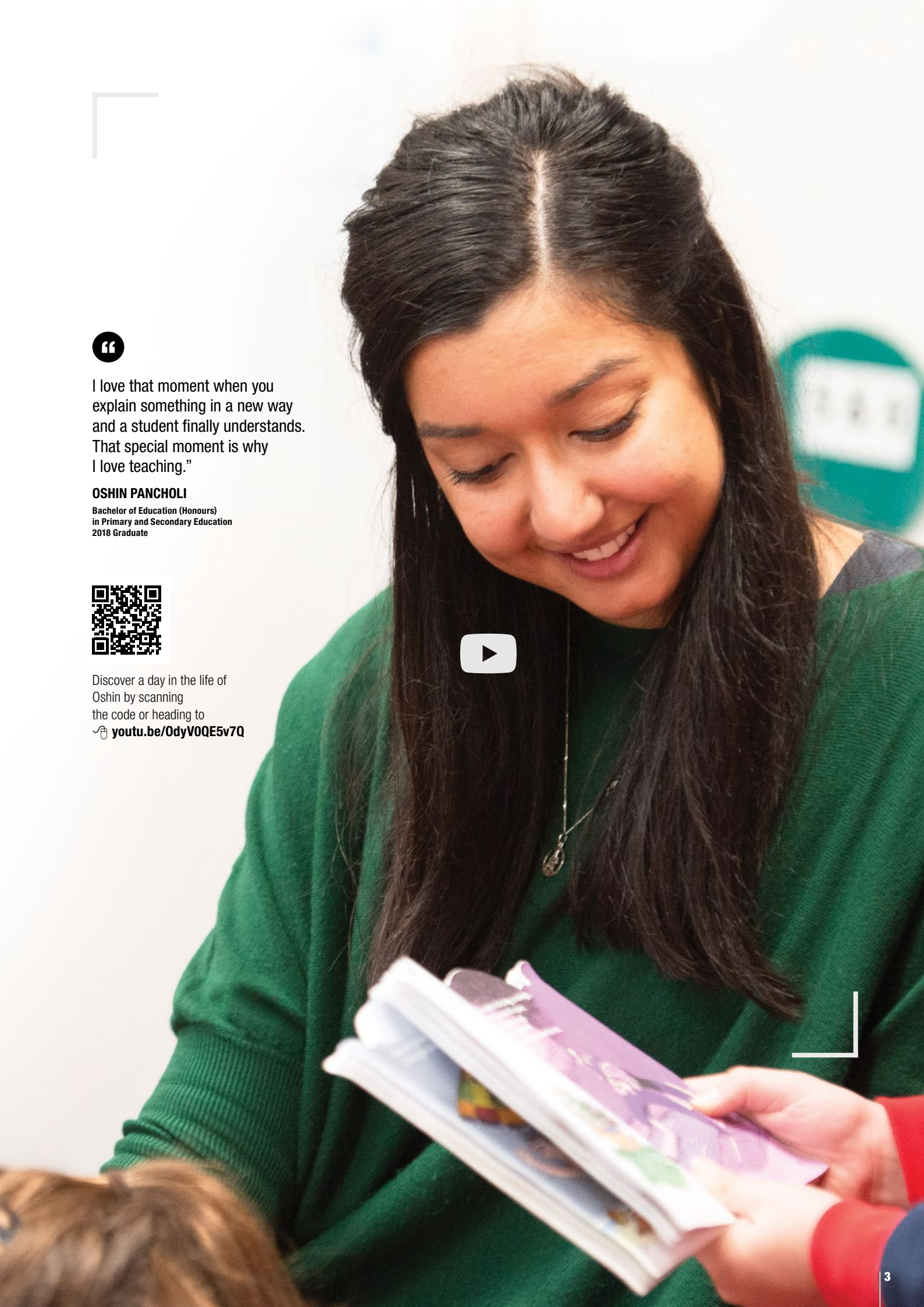
I love that moment when you explain something in a new way and a student finally understands. That special moment is why I love teaching.”

OSHIN PANCHOLI

Bachelor of Education (Honours)
in Primary and Secondary Education
2018 Graduate



Discover a day in the life of Oshin by scanning the code or heading to youtu.be/OdyV0QE5v7Q



Admission snapshot

ATAR: E:75+ RC¹

Subject prerequisites

English and Maths

Admissions test

All applicants are required to complete an online 90-minute test (CASPer)

Double degrees may have a higher ATAR and additional entry requirements such as another prerequisite.

See page 8 for more information about admissions and a full list of entry requirements.

COURSE CODE: D3001 CRICOS CODE: 082360G

Bachelor of EDUCATION (Honours)

Education makes the world a better place.

Great teachers can change the world, one student, one classroom, one school at a time. In an education degree you'll learn so much more than lesson planning and behaviour management. You'll study the development of learners and how to work with a diverse range of students, and you'll discover that learning comes in all different forms. Studying an honours degree means you'll also look deeper into educational research, and be able to reflect on your own practice as an educator and leader.

Professional experience plays a large part of an education degree, and at Monash you'll have work placements every year, to nurture your continued growth and confidence as a teacher.

Professional recognition

To teach in a Victorian school, graduates must be registered with the Victorian Institute of Teaching (VIT).

Students planning to register and work as school teachers or early childhood teachers

in Australia or overseas should check registration requirements with local teacher regulatory bodies in case additional requirements apply.

Specialisations in early childhood education are accredited by the Australian Children's Education and Care Quality Authority (ACECQA). This means that these qualifications will be accepted for early childhood teacher registration in Victoria and most other Australian states and territories, which qualifies you to work as a teacher in licensed preschools and childcare centres in Victoria. If you plan to teach in a preschool or kindergarten setting then you'll need to register with the VIT.

All primary and secondary education specialisations (including double degrees) are accredited by the VIT using the national accreditation standards. This means that these qualifications will be accepted for school teacher registration in Victoria and all other Australian states and territories.

www.acecqa.gov.au

www.vit.vic.edu.au

SINGLE DEGREE COURSE STRUCTURE (Indicative)

This is an example of what your studies as a Monash Education student could look like. These tables are to be used as a guide only. The structure of each specialisation may vary slightly. To view course maps for each specialisation, visit monash.edu/education/coursemaps

Primary and Secondary Education

| YEAR 1 | UNITS | | | | | OVERLOAD |
|-------------------|-------------------|------------------------|--|-------------------|---------------------------|---|
| Semester 1 | Education studies | Education studies | | Education studies | Secondary discipline unit | National literacy test / National numeracy test |
| Semester 2 | Education studies | Education studies | Professional experience 10 days secondary school | Education studies | Secondary discipline unit | |
| YEAR 2 | | | | | | |
| Semester 1 | Education studies | Primary specialisation | Professional experience 10 days primary school | Education studies | Secondary discipline unit | Education studies |
| Semester 2 | Education studies | Primary specialisation | | Education studies | Secondary discipline unit | Education studies |
| YEAR 3 | | | | | | |
| Semester 1 | Education studies | Primary specialisation | Professional experience 10 days secondary school | Education studies | Secondary discipline unit | |
| Semester 2 | Education studies | Primary specialisation | Professional experience 15 days primary school | Education studies | Secondary discipline unit | |
| YEAR 4 | | | | | | |
| Semester 1 | Education studies | Primary specialisation | Professional experience 20 days secondary school | Education studies | Secondary method unit 1A | |
| Semester 2 | Education studies | Primary specialisation | Professional experience 20 days primary school | Education studies | Secondary method unit 1B | |

¹ RC – Range of criteria.

DOUBLE DEGREES IN EDUCATION

Study a double degree and you'll not only learn everything you need to know to be a fantastic teacher, but you'll graduate with a full separate qualification in an area that you love.

Our double degrees can be studied with two different specialisations: Primary education or Secondary education. If you study a double degree with Primary education, your subject choices in your second degree won't have any influence on your education studies. If you study a double degree with Secondary education, the subjects you choose in your second degree will correspond to the teaching areas you'll be able to teach in high schools after you graduate.

Secondary specialist teaching areas

Choose two (or one double) specialist areas from the list below. Your teaching areas must be from the same degree (e.g. a Business double degree student must choose two from accounting, business management, economics, legal studies and social education). Some teaching areas may have additional prerequisites. Visit monash.edu/education/specialist for details.

Arts

- Drama
- English as an additional language
- English
- Geography
- History
- Languages (can be taken as a double specialist area)
- Legal studies
- Media studies
- Music
- Psychology
- Social education

Business

- Accounting
- Business management
- Economics
- Legal studies
- Social education

Fine Art

- Visual arts (taken as a double specialist area)

Music

- Music (taken as a double specialist area)

Science

- Biology
- Chemistry
- General science
- Geography
- ICT
- Mathematics
- Physics
- Psychology

DOUBLE DEGREE COURSE STRUCTURE (Indicative)

This is an example of what your studies as a Monash Education student could look like. These tables are to be used as a guide only.

The structure of each specialisation may vary slightly. To view course maps for each specialisation, visit monash.edu/education/coursemaps

Secondary Education and Science

| YEAR 1 | UNITS | | | | OVERLOAD | |
|-------------------|-------------------|-------------------|---------------------------------|---------------------------|--------------------------|---|
| Semester 1 | Education studies | Science studies | | Science studies | Science studies | National literacy test / National numeracy test |
| Semester 2 | Education studies | Science studies | Professional experience 10 days | Science studies | Science studies | |
| YEAR 2 | | | | | | |
| Semester 1 | Education studies | Education studies | Professional experience 10 days | Science studies | Science studies | Science studies |
| Semester 2 | Education studies | Education studies | | Science studies | Science studies | Science studies |
| YEAR 3 | | | | | | |
| Semester 1 | Education studies | Education studies | Professional experience 10 days | Science studies | Science studies | |
| Semester 2 | Education studies | Education studies | Professional experience 10 days | Science studies | Science studies | |
| YEAR 4 | | | | | | |
| Semester 1 | Education studies | Education studies | Professional experience 20 days | Secondary method unit 1A | Secondary method unit 2A | |
| Semester 2 | Education studies | Education studies | Professional experience 20 days | Secondary methods unit 1B | Secondary method unit 2B | |

PROFESSIONAL EXPERIENCE

With placements every year during your degree, you'll be able to apply your skills and knowledge as you learn them.

How do placements work?

Every student will be provided with a minimum 80 days of professional experience (90 days for the Early Childhood and Primary Education specialisation). This is organised by the faculty's Professional Experience Office (PEO), meaning you don't have to look for your own placements.

Standard placements take place in schools in and around Melbourne, and can be in public or private schools. You'll usually be placed in a different school for each placement.

Before you start placements, you'll have a preparation class so you know what to expect when you go to a school, what to wear, where to go, how to act professionally, and much more! You'll also get lots of support from the PEO during your placement so you can get the most out of your experience.

International placements

Head overseas on placement to see how teaching and learning works in different cultural settings, and get university credit for your travels. Current international opportunities include China, Cook Islands, England, Italy, Japan, Switzerland, United Arab Emirates, and Vietnam.

Rural and regional placements

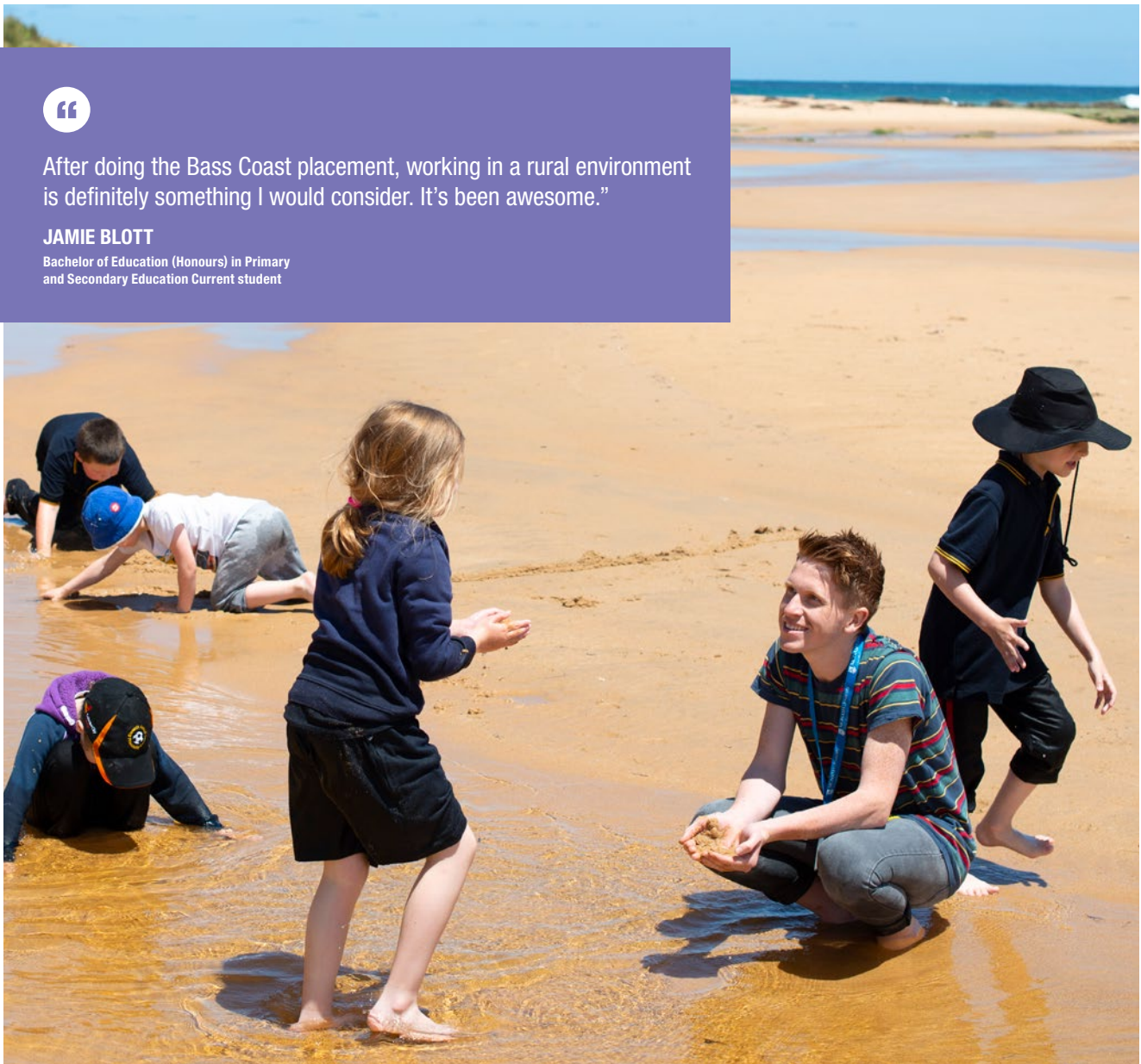
Get off the beaten track and choose a placement outside of metropolitan and suburban Melbourne. Head to the centre of Victoria's Food Bowl in sunny Mildura, or get some fresh seaside air on our Bass Coast placement, and experience learning and teaching in a different setting.



After doing the Bass Coast placement, working in a rural environment is definitely something I would consider. It's been awesome."

JAMIE BLOTT

Bachelor of Education (Honours) in Primary and Secondary Education Current student





I had a special placement at the Monash Tech School during my degree, and really enjoyed the opportunity to work with new programs and technologies. My eyes were opened to how easily technology can be used to enhance and enrich student learning.”

SHERIN GEORGE

Bachelor of Education (Honours) in Secondary Education
and Bachelor of Science double degree
2019 Graduate

ENTRY REQUIREMENTS

Minimum entry scores

| | ATAR [^] | IB Diploma (Domestic) [^] | GCE A Level | All India Senior School Certificate | Indian School Certificate Examination | Advanced Placement | ACT, USA | SAT, USA (Total score out of 1600) | High School Diploma, Vietnam | Hong Kong Diploma of Secondary Education | Ontario Secondary School Diploma | SMA3, Indonesia | STPM, Malaysia | UEC, Malaysia | Monash University Foundation Year | UNSW Foundation Studies | University of Melbourne, Trinity College Foundation Studies |
|---|-------------------|------------------------------------|-------------|-------------------------------------|---------------------------------------|--------------------|----------|------------------------------------|------------------------------|--|----------------------------------|-----------------|----------------|---------------|-----------------------------------|-------------------------|---|
| SINGLE DEGREE SPECIALISATIONS | | | | | | | | | | | | | | | | | |
| Early Childhood and Primary Education | 77.30 RC | 26 RC | 8 | 70% | 65% | 6 | 25 | 1160 | 8.14 | 17 | 78.50% | 80% | 7.9 | 5 | 70% | 7 | 72% |
| Primary Education (single degree) | 76.35+ RC | 26+ RC | | | | | | | | | | | | | | | |
| Primary and Secondary Education | 77+ RC | 26+ RC | | | | | | | | | | | | | | | |
| Primary and Secondary Inclusive Education | 79.15+ RC | 27 RC | | | | | | | | | | | | | | | |
| Primary and Secondary Health and Physical Education | 78.40 RC | 27 RC | | | | | | | | | | | | | | | |
| Secondary Health and Physical Education | 75.55+ RC | 26+ RC | | | | | | | | | | | | | | | |
| DOUBLE DEGREE SPECIALISATIONS | | | | | | | | | | | | | | | | | |
| Primary Education and Arts | 84.35 RC | 30 RC | 9 | 75% | 70% | 7 | 27 | 1190 | 8.28 | 18 | 81.60% | 83% | 8.5 | 4.2 | 72.50% | 7.5 | 77% |
| Secondary Education and Arts | 84.20 RC | 29 RC | 9.5 | 78.50% | 72.50% | 7 | 28 | 1220 | 8.35 | 18 | 83.20% | 84% | 8.8 | 3.8 | 70% | 7.75 | 79% |
| Primary Education and Business | 90.75 RC | 33 RC | | | | | | | | | | | | | | | |
| Secondary Education and Business | 85.55 RC | 30 RC | 9 | 75% | 70% | 7 | 27 | 1190 | 8.28 | 18 | 81.60% | 83% | 8.5 | 4.2 | 70% | 7.5 | 77% |
| Primary Education and Fine Art | 82+ RC | 29+ RC | | | | | | | | | | | | | | | |
| Secondary Education and Fine Art | 83.65+ RC | 29+ RC | 9 | 75% | 70% | 7 | 27 | 1190 | 8.28 | 18 | 81.60% | 83% | 8.5 | 4.2 | 70% | 7.5 | 77% |
| Primary Education and Music | 89.65 RC | 32 RC | | | | | | | | | | | | | | | |
| Secondary Education and Music | 89.30 RC | 32 RC | 9 | 75% | 70% | 7 | 27 | 1190 | 8.28 | 18 | 81.60% | 83% | 8.5 | 4.2 | 70% | 7.5 | 77% |
| Primary Education and Science | 83.20+ RC | 29+ RC | | | | | | | | | | | | | | | |
| Secondary Education and Science | 85.50 RC | 30 RC | 9 | 75% | 70% | 7 | 27 | 1190 | 8.28 | 18 | 81.60% | 83% | 8.5 | 4.2 | 72.50% | 7.5 | 77% |

Prerequisite subjects and extra requirements

PREREQUISITES FOR ALL SINGLE DEGREE AND DOUBLE DEGREE SPECIALISATIONS:

VCE English: Units 3 & 4: a study score of at least 30 in English (EAL) or 25 in English other than EAL.

VCE Maths: Units 1 & 2: satisfactory completion of two units (any study combination) of General Mathematics, Mathematical Methods or Specialist Mathematics; **OR** Units 3 & 4: any mathematics.

IB English: At least 4 in English SL or 3 in English HL or 5 in English B SL or 4 in English B HL.

IB Maths: At least 3 in any mathematics subject.

ADDITIONAL PREREQUISITES FOR DOUBLE DEGREE SPECIALISATIONS WITH BUSINESS:

VCE Maths: Units 3 & 4: a study score of at least 22 in Mathematical Methods (any) or Specialist Mathematics, or a score of at least 25 in Further Mathematics.

IB Maths: At least 4 in Mathematics SL or 3 in Mathematics HL or 3 in Further Mathematics HL or 4 in Math Studies SL.

ADDITIONAL REQUIREMENT FOR DOUBLE DEGREE SPECIALISATIONS WITH FINE ART:

All applicants must submit a digital folio. Domestic and onshore applicants must also submit a 300-word written statement.

ADDITIONAL REQUIREMENT FOR DOUBLE DEGREE SPECIALISATIONS WITH MUSIC:

All applicants must complete an audition/composition submission.

ADDITIONAL PREREQUISITES FOR DOUBLE DEGREE SPECIALISATIONS WITH SCIENCE:

VCE Science/Other: Units 3 & 4: at least 25 in one of Biology, Chemistry, Environmental Science, Geography, Mathematical Methods (Any), Specialist Mathematics, Physics or Psychology.

IB Science/Other: One of Biology (any), Chemistry (any), Geography (any), Mathematics SL, Further Mathematics SL, Mathematics HL, Physics (any) or Psychology (any).

English language requirement for students with a non-English speaking background or education²

| ACADEMIC IELTS | Overall band score | 6.5 |
|----------------------|--------------------|-----|
| | Listening | 6.5 |
| | Reading | 6.5 |
| | Speaking | 6.0 |
| | Writing | 6.0 |
| INTERNET BASED TOEFL | Total Score | 79 |
| | Listening | 20 |
| | Reading | 19 |
| | Speaking | 18 |
| | Writing | 21 |

Monash English Bridging is available for international students who do not meet these requirements. Find out more at [monashcollege.edu.au](https://www.monashcollege.edu.au).

Admissions test

CASPer: All applicants are required to complete an online 90-minute computer-based test (CASPer). For more information, please visit [monash.edu/education/casptest](https://www.monash.edu/education/casptest). When registering for your test, please ensure you select "Undergraduate Teacher Education."

Enrolment considerations

Literacy and Numeracy Test: All students enrolled in Australian initial teacher education courses must achieve a satisfactory standard in the National Literacy and Numeracy Test prior to graduating.

Working with Children Check: Before participating in a professional experience placement in any educational setting, students must meet specific security clearances that apply to the state or territory where the placement is being undertaken.

Immunisations: The Victorian Government recommends you have immunisations for the Early Childhood and Primary Education specialisation as per the Government website, 'Vaccination for people working with children'. Refer to www.health.vic.gov.au for details.

¹ The scores provided are to be used as a guide only, and are either the lowest selection rank to which an offer was made in 2021 or an estimate. RC – Range of criteria.

² Not normally accepted for applicants whose secondary schooling was entirely in an English medium education institution. Please note that these scores are subject to change.

[^] ATAR and IB scores may vary for international students. Find out more at [monash.edu/study/courses/find-a-course/2021/education-d3001](https://www.monash.edu/study/courses/find-a-course/2021/education-d3001)

PATHWAYS AND ACCESS SCHEMES

Monash Access Program

Pathway to first year of single degree specialisations. For domestic students at least 21 years old who have not undertaken any prior study at university.

TAFE Qualification

Must be a Certificate IV level or higher, and must be graded to be considered for entry.

Monash College Diploma

Pathway to second year of selected double degrees. For students who have missed out on meeting entry requirements into an Education double degree.

Single University units

Studying two or more single university units can help you meet prerequisites you have missed.

Monash University Foundation Year

Pathway to first year. For international students who have not completed an Australian Year 12.

Diploma of Higher Education

Pathway to second year of selected specialisations. ATAR of at least 60, with a study score of at least 30 in English (EAL) or 25 in any other English. This course is for domestic students only.

Diploma of Tertiary Studies

Pathway to second year of selected specialisations. ATAR of at least 50, with a study score of at least 30 in English (EAL) or 25 in any other English. This course is for domestic students only.

Monash Indigenous Entry Scheme

This scheme provides an entry point for Aboriginal and Torres Strait Islander applicants who achieve a minimum ATAR of 70.

Monash Guarantee

This can get you into a course even if you don't reach the lowest selection rank, if you meet certain criteria based on your circumstances. The Monash Guarantee ATAR for single degrees is 70, and 77 for double degrees.

Special Entry Access Scheme

SEAS adjusts your ATAR in recognition of circumstances that may have affected your education.

For more information on Pathways visit monash.edu/education/pathways

For more information on Access Schemes visit monash.edu/study/how-to-apply/entry-schemes

HOW TO APPLY

Domestic (Australian) and onshore international students

Apply through VTAC

If you're an Australian or New Zealand citizen, an Australian permanent resident, or you're an international student studying an Australian Year 12 or IB in Australia or New Zealand, apply through the Victorian Tertiary Admission Centre (VTAC).

www.vtac.edu.au

Fees – Commonwealth Supported Places

Reduced course fees for eligible applicants, and HECS-HELP.

monash.edu/enrolments/government-loans/commonwealth-supported-place

International students

International students not currently studying an Australian Year 12 or IB in Australia should apply directly to the University.

monash.edu/admissions/apply/online

Fees

Fees for each course can be found at monash.edu/study

Scholarships

monash.edu/scholarships



The Diploma of Tertiary Studies helped me feel more supported and to understand the structure of university. I transferred straight into second year of the Bachelor of Education, with the same teachers and friends.”

CASSANDRA KOVAC

Diploma of Tertiary Studies and Bachelor of Education
2015 Graduate



Watch Cassie's journey by scanning the code or heading to youtu.be/egAqxaspxE



Monash Education Online

monash.edu/education

FACEBOOK

facebook.com/educationmonash

INSTAGRAM

@monash_education

TWITTER

@monasheducation

YOUTUBE

youtube.com/monashunieducation

MONASH UNIVERSITY

monash.edu

FIND A COURSE

monash.edu/study

INTERNATIONAL STUDENTS

monash.edu/study/international

FUTURE STUDENT ENQUIRIES

**Australian citizens, permanent residents
and New Zealand citizens**

T 1800 MONASH (666 274)

E future@monash.edu

monash.edu/study/contact

International students

T Australia freecall: 1800 MONASH (666 274)

T +61 3 9903 4788 (outside Australia)

E study@monash.edu



MIX
Paper from
responsible sources
FSC® C010983